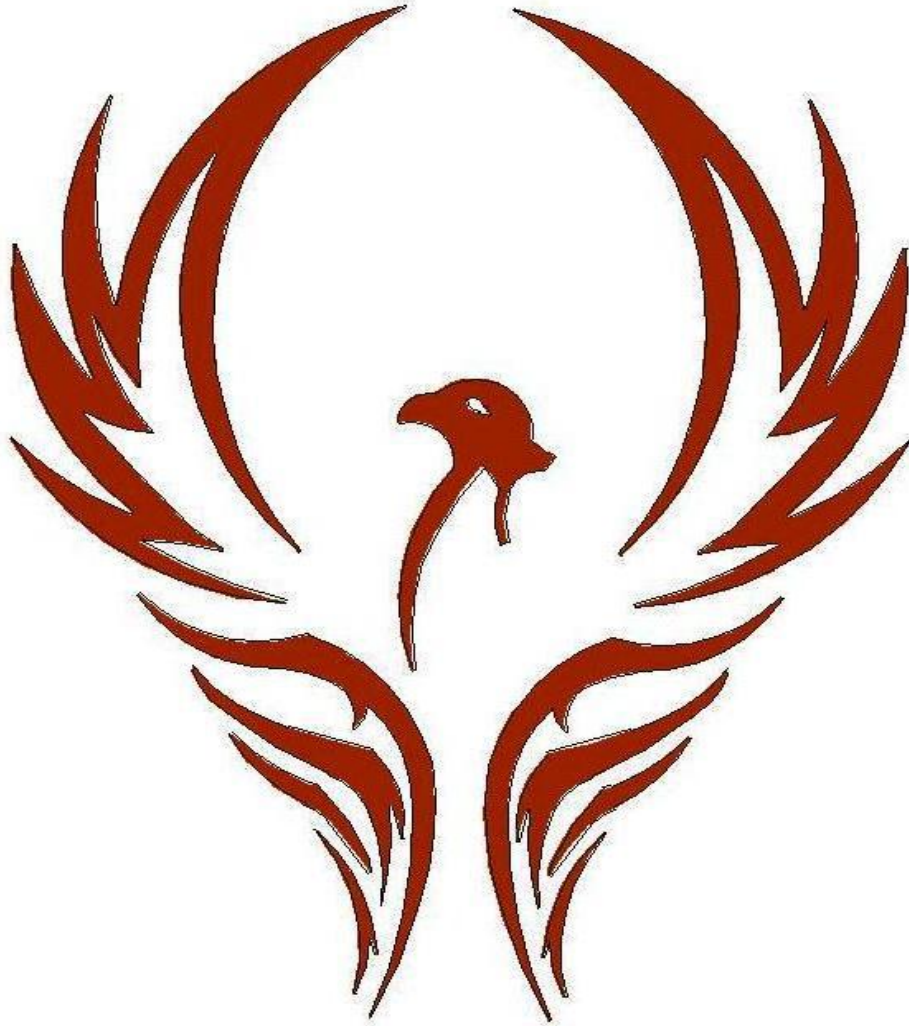


Phoenician Marble Tr LLC

Prequalification Document



P.O. Box 68938 Sharjah, UAE
Tel: +971 6 5351906 Fax: +971 6 535 1907, Email: info@phoenician-marble.com,
Website: www.phoenician-marble.com, Facebook Page: [@Phoenician065351906](https://www.facebook.com/Phoenician065351906)

[Phoenician Marble Tr LLC, All rights reserved. This document or any part thereof may not, without the written consent of Phoenician Marble Tr LLC, be copied, reprinted, or reproduced in any material form, including but not limited to photocopying, transcribing, transmitting, or storing it in any medium or translating it into any language, in any form or by any means, be it electronic, mechanical, xerographic, optical, magnetic or otherwise.]

TABLE OF CONTENTS

SR. NO	DESCRIPTION	Page No
1	Executive Summary	3
2	Introduction	3
2.1	Vision & Mission	4
3	Quality Assurance	4
4	Organizational Structure	8
5	Tools & Equipment	9
6	Project Planning, Execution & Control Procedure	10
7	List of Projects Executed	17

1.0 Executive Summary

Stone is the world's original building and memorial material. It has been used for thousands of years and most of the oldest, remaining structures in the world are made from stone. Stone continues to be used in and on new structures. Its natural beauty and enduring quality is highly preferred.

Phoenician Marble Tr LLC is UAE-based company importer, exporter, cutter, distributor, fabricators and installer of marble, granite, sand stone and lime stone. Recently the firm sought out additional monies to market directly to consumers, architects, and designers. As we recognized how people are craving more upscale luxury products (including marble) in their lives. We have been engaged in most prestigious projects in Gulf Countries, not only in supply of material but in installation and preparation of shop drawings as well.

2.0 Introduction

Phoenician Marble Tr L.L.C. was established in 2004 as an extension of the Lebanon based Rizkallah GROUP Industrial Co.S.A.L with a primary purpose to meet all kinds of requirements for marble, Granite, Limestone and sand stone within and outside of Gulf Countries

We are proud to introduce ourselves as one company which is fully mechanized with complete unit for marble and granite processing headed by highly qualified experts to gear the production & marketing. Hence our establishment is considered to be one of the leading companies in this field.

In the last on decade we have build up a solid reputation by supplying fine high quality material to important market and major international projects around the world

2.1 Vision & Mission Statement

We provide our clients with various rang of creative design in water jet patterns and engravings to achieve their satisfaction. Our mission and vision is to ensure quality control and services at all times, and to build up a good market reputation. We have no limit for our vision with a vast of global network of quarries and suppliers (extending over Italy, Spain, Portugal, Turkey, China and India). We have organized all the trade and export services with the utmost efficiency, the success of which is demonstrated by a long list of satisfied highly valued clients around globe. The growth of our organization is based on flexibility and close personal relationship with our customers worldwide. In our Endeavour to serve our customers better, we are constantly striving to further improve our systems.

3.0 Quality Assurance

Phoenician Marble Tr LLC maintains & adheres to local and international quality assurance standards as a part of company rules and guidelines. Believing in importance of sustaining quality as a core value & for performance monitor purpose. Since establishment in 2004 our management and teams are fully committed to a policy which clearly addressed the following targets

- ✚ Executing projects with quality and proficiency.
- ✚ Meeting Target Dates.
- ✚ Insuring Customer's satisfaction.
- ✚ Maintaining a safety and implementing a loss prevention program.
- ✚ Improving methodologies and tools to achieve the highest productivity criteria.
- ✚ Ensuring the full adherence to the local regulations and standards.



GOVERNMENT OF SHARJAH
Economic Development Department



حُكُومَةُ الشَّارِجَة
دائرة التنمية الاقتصادية

رخصة تجارية
Trading License



* 5 4 9 5 6 0 *

Issue Date 2007/01/10

تاريخ الإصدار

License No.

549560

رقم الرخصة

Expiry Date 2022/01/08

تاريخ الإنتهاء

Registration No.

38057

رقم السجل

Trade Name PHOENICIAN MARBLES TR.LLC

الاسم التجاري الفينيقي لتجارة الرخام ذ م م

Legal status Limited Liability Company

الشكل القانوني شركة ذات مسؤولية محدودة

اطراف الرخصة License Members

الحصص	الصفة	رقم الهوية / الجواز	الجنسية	إسم المستثمر	رقم المستثمر
Shares	Type	ID/Passport No.	Nationality	Investor Name	Investor No.
%51	شريك	784196974386037	الإمارات	حسن عبدالله احمد الحرفي الشحي	4795340
%49	شريك	784197319047987	لبنان	ابراهيم مخايل رزق الله	95068

المدير ابراهيم مخايل رزق الله

أنشطة الرخصة استيراد وتجارة الرخام - بالجملة تجارة الرخام - بالجملة نشر الرخام وتقطيعه وصقله

العنوان الشارقة-صناعية رقم15/الشارقة- خلف شارع الشيخ محمد بن زايد -أرض مسورة رقم 8 ملك صفوت وليد كامل المزيني

رقم الهاتف المتحرك: 0506554667

صندوق البريد: 5652 الشارقة

الملاحظات Notes

- حذف باب رقم 9



2021/01/12

تاريخ الطباعة

42717

رقم المستخدم

- This document is official. It doesn't need to be stamped or signed.

To view license details please visit SEDD web site: www.sedd.ae

- Distribution of flyers is strictly prohibited in public and residential areas.
Distribution is allowed through.

- هذه الوثيقة رسمية ولا تحتاج لختم أو توقيع.

للتأكد من صحة البيانات يرجى زيارة موقع الدائرة: www.sedd.ae

- يمنع منعاً باتاً توزيع الإعلانات في الأماكن العامة والأحياء السكنية. التوزيع فقط عن طريق الصحف، المجلات وصناديق البريد.



No. C



766758



مکان العقد / Contract place

Re-new / تجديد

New / جديد

الشاري

For Commercial, industrial or free professions purposes

لغايات ممارسة نشاط تجاري أو صناعي أو ممارسة المهنة الحرة

Details of Lessee

بيانات المستأجر

License number: رقم الرخصة:

License Name: الاسم التجاري: الفينيقي لتجارة الرخام

Designation: الاسم:

Nationality: الجنسية: الإمارات / لبنان

Profession: المهنة:

ID No.: رقم بطاقة الهوية:

Address: العنوان:

Fax: هاتف: 0505347790 Tel: 0505347790

P.O. Box: ص.ب: 68938 شى

E-mail: البريد الإلكتروني:

Details of Lessor

بيانات المؤجر

Lessor card number: رقم بطاقة المؤجر: ١٠٩٤

Name: الاسم: صفوت وليد كامل المزيني

Designation: الصفة: والدك

Nationality: الجنسية: فلسطين

Profession: المهنة: تاجر

ID No.: رقم بطاقة الهوية:

Address: العنوان: الشاري

Telephone: هاتف: 0506321675

Fax: براق:

P.O. Box: ص.ب: 4719 شى

E-mail: البريد الإلكتروني:

Details of Rent

بيانات الإيجار

Purpose of rent: الغرض من الإيجار: للإستعمال

Rent duration: مدة الإيجار: سنة واحدة

Starting date: تبدأ من: ٢٠١١/١/٤

Expiry date: وتنتهي في: ٢٠٢٢/١/٣

Rent: (monthly, annual, full time) بدل الإيجار: (شهري, سنوي, المدة كاملة) ١٢٥,٠٠٠ سنوي

Total amount in characters: القيمة الإجمالية بالأحرف: مائة وخمسة وثلاثون ألف درهم

Payment method: طريقة السداد: دفاتر

Leased Premises

العين المؤجرة

City: المدينة: الشارجه

Area: المنطقة: الصناعي 15

Bond type: نوع السند: ملك

Bond No.: رقم السند: 6454

Bond date: تاريخ السند: 22/8/2012

Governmental No.: الرقم الحكومي:

Plot No.: رقم القطعة:

Building name: اسم المبنى:

Building No.: رقم المبنى:

Name & Street No.: اسم ورقم الشارع:

Rented property type: نوع العين المؤجرة: ارض مسورة

Description: وصفها: ارض ومكتبه وجزره

Area: مساحتها: ٥٥٦,٨ متر

Property No. / Shop: رقم العين / المحل: ٨

Any scratch or change or deletion invalidates the contract.

أي كشط أو حذف أو تصديق يفسد العقد.

P.O. Box 68938 Sharjah, UAE

Tel: +971 6 5351906 Fax: +971 6 535 1907, Email: info@phoenician-marble.com, Website: www.phoenician-marble.com, Facebook Page: @Phoenician065351906



General Conditions

No. C 766758

شروط عامة

- Both parties agreed upon Law No. (2) of the year 2007 regarding relationship organization between lessor and lessee and the executive regulations and decisions implemented in the emirate of Sharjah.
- Ratify tenancy contract within fifteen (15) days from the date of signing according to article (3), Law No. (2) of the year 2007.
- Both parties have to notify the Municipality of any amendments made in address or chosen residence.
- Municipality collects due fees at contract attestation.
- Tenant has no right to waive or sublease property for investment, unless authorized by the Department of Economic Development in the emirate and with a written approval of the lessor.

- أقر طرفا العقد بأنهما اطلعا على القانون رقم (٢) لسنة ٢٠٠٧م بشأن تنظيم العلاقة بين المؤجر والمستأجر في إمارة الشارقة ولائحته التنفيذية والقرارات المنفذة له.
- يجب تصديق عقد الإيجار خلال مدة (١٥) خمسة عشر يوماً من تاريخ توقيعه وذلك طبقاً لأحكام المادة (٣) من القانون رقم (٢) لسنة ٢٠٠٧م المشار إليه.
- يجب على طرفي العقد إخطار البلدية بأي تعديل يطرأ على عنوانها أو مقر إقامتهما المختار.
- تحصل البلدية الرسوم والغرامات المستحقة عند تصديق العقد.
- لا يجوز للمستأجر التنازل عن الإيجار أو التأجير من الباطن إلا إذا كان مخصصاً له بذلك من دائرة التنمية الاقتصادية بالإمارة وبإذن كتابي من المؤجر.

Special Conditions

شروط خاصة

- Electricity & water to be paid by tenant
- Maintenance to be paid by tenant
- Cannot be subleased or assigned to others
- Fine 500 dhs if any cheque return
- The landlord may vacate the tenancy subject on expiry of the contract.
- Renewal of contract should be done 15 days before its expire
- If the cheques is return and we could then find with on one month we have authority to open the flat without court approval

- الماء والكهرباء علي المستأجر
- مصاريف الصيانة الناتجة عن سنوة استعمال العقار بالإيجار علي حساب المستأجر
- لا يجوز التأجير من الباطن أو التنازل للغير
- عسائر سنة ٥٠٠ درهم عن كل شيك راجع
- يحق للمالك تخليص المؤجر عند نهاية العقد
- التجديد قبل انتهاء العقد مدة ١٥ يوم
- ارجاع العين المؤجرة كما كانت عند تأجيرها

- Both parties agreed upon the information herein.
- This contract with conditions stated in signed on.

- أقر الطرفان بصحة المعلومات الواردة بهذا العقد.
- تم التوقيع على هذا العقد بالشروط الواردة بتاريخ

Lessee code

944888

رمز المستأجر

Lessor code

Lessee

المستأجر

Lessor

المؤجر

For Official Use

Contract number:

3987448

Date:

902922193

Fees received by receipt no.:

11-01-2021

Date:

11-01-2021

Amount:

6300

Officer:

H375



Electricity Account No.

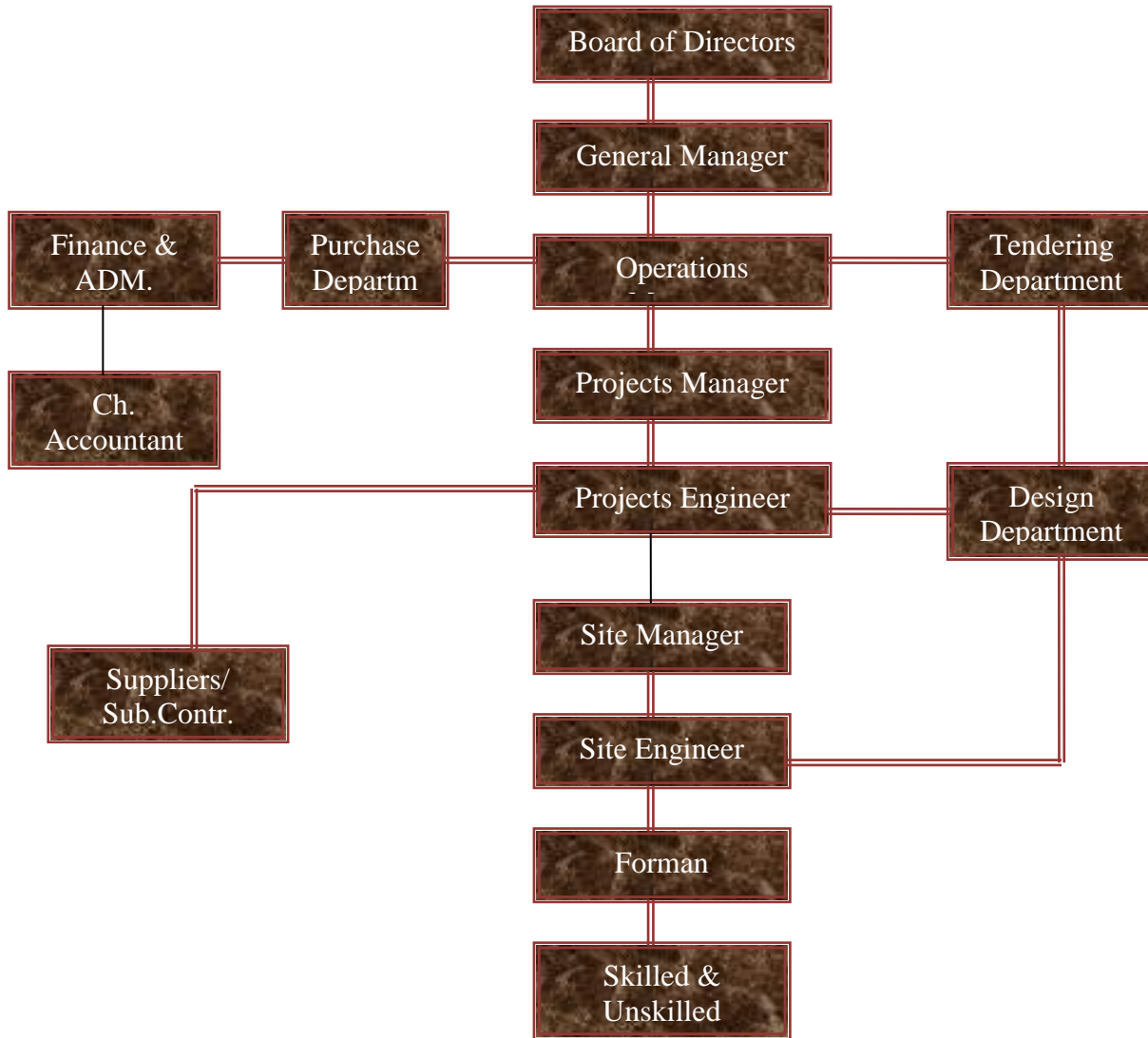
رقم حساب الكهرباء

Reference

المرجع

7218526418
9302230082

Organizational Structure



5.0 Tools & Equipments

Phoenician marble tr. L.l.c. Has qualified personnel and high capacity equipment for every stage of the production process at office level. With the technical support of professionally qualified and experienced architects operating on computer aided design (AutoCAD), we specialize in the in-house preparation of advanced shop drawings based on which the works are executed at factory level (25) operatives.

The following machinery installed in Sharjah industrial area 15 factories are capable of giving an output of up to 10,000 M² per month of finished materials cutting.

Machine Details	Output/ Machine /Day	No. Of Machines
Auto Matic Bridge Cutting Machines	200 M ²	1
Semi Automatic And Manual Cutting Machines	+ 50 M ²	1
Water Jet Cutting Machine	150 M ²	1
Manual Polishing Machines	150 M ²	2
Automatic Drilling And Recessing Machine For The Preparation Of The Marble /Granite For Dry Fixing	50 M ²	1
Automatic Drilling And Recessing Machine For The Preparation Of The Marble /Granite For Dry Fixing	50 M ²	1
Automatic Lathe Machine To Produce Solid Circular Columns, Balustrades Etc.	20 Balustrades or 10 Columns	1
Automatic Machine To Produce Antique Marble	50 M ²	1
Sand Blasting And Flaming Machine / Water Blaster	50 M ²	1
Light Equipments Consisting Of Angle Grinders / Water Grinders / Drills And All The Necessary Installation Tools		30

6.0 Project Planning, Execution & Control Procedure

Our Project Planning, Execution & Control Procedure (PPE&CP) consist on following elements'

- 6.1 EXAMINATION
- 6.2 PREPARATION
- 6.3 INSTALLATION
- 6.4 PROTECTION

6.1 Examination

Verify dimensions of installed work in this field to ensure that fabrication of stone unit suits actual conditions before installation commences.

Ensure that mechanical, electrical and similar installations that penetrate stone are located so that proper cut-outs are provided in the stone as per services drawings approved by the Engineer.

Examine existing construction that provides back-up, support and anchorage for stone before installation commences.

Ensure that surfaces to receive stone are free of loose dirt, sand, bituminous materials, oil grease and other foreign materials.

6.2 Preparation

Verify the approved drawings for the key numbers of the stonework to be used on every particular part of the project.

Locate the crates containing the pieces of stonework whose numbers tally with the key numbers of the drawings. Make sure that the stone panels have no damages, stains, undulations etc. and does not exceed the approved samples with regards to dark spots, blemishes, texture variation, colour range, etc.

The exact position of the stones is to be examined in function of the existing concrete structures in order to achieve an optimum use of the available tolerances of the angles. Special care is to be taken of the determination of this position in the case of non-linear concrete surfaces (circular, oval, inclined surfaces).

Take the type of angle required for the particular panel at the specified place of work. Measure the distance between the drilled holes of the panel and make the marking for the Verify with a steel detector for the presence of reinforcement bars inside the wall. If there are rebar's at the required place then the hole and the recess on the stonework panel have to be altered to a new location dictated by the non-presence of rebar in the wall. Therefore a new hole has to be drilled and the recess in the granite panel re-positioned accordingly so that all anchors will be concealed.

Rectification to the panels of the bottom row will affect the position of the holes and the recess on the next row which will be also re-positioned accordingly.

Drill the hole for the expansion bolt and install the anchor in accordance with the manufacturer's recommendations regarding depth of the hole to be drilled, diameter of the hole, the torque to apply.

Securely fix in place strap anchors, clips, angles and hangers as required for proper support of stone.

Make sure the angle is fixed to its support in a rigid manner so as to avoid any movement of the stone.

Cut, drill and fit stone units to accommodate the installation work of other sections and as required. Cut and drill for other sections only as instructed by the Engineer and to templates provided by the applicable section.

Clean stone before installation with non-metallic bristle brushes. Rinse with a complete drenching with clean water. Use cleaning compounds only if necessary and only when they contain no caustic compound, or abrasive materials.

Before installing stone, clean bearing surfaces and backing.

6.3 Installation

+ General

- All fastenings are to be concealed.
- Dielectric separation between dissimilar metals in contact will be provided.
- Stone to be secured with anchor dowels, cramps, etc.
- Except where provisions are indicated on drawings for removal of stone, set anchorage solidly in mortar.

+ Mortar Beds and Joints

- (Pavers and Floorings)
- Wet stone units before placing on mortar bed. Ensure that units have no water adhering to their surfaces when laid, but shall be wet only to ensure that complete hydration takes place during hot drying weather.
- When work is resumed at stone previously laid with mortar either partially or totally set, remove loose mortar from to and adjoining surfaces. Remove mortar completely when stone is removed and replaced with new.
- At stone pavers, place mortar setting bed full depth and screed to levels required by finish at stone interior flooring, place, level and compact sand bed. Install slip sheet with joints lapped a minimum of 50mm. Place mortar setting bed with reinforcing mesh at centre of bed and completely embedded in mortar.



- Remove and reset stones which when struck have a hollow sound after they have been installed to provide solid bedding.

Mortar Joints

- Wet stones before setting with mortar joints. Ensure that no free water remains on joints to set stones with bed and vertical joints filled solidly with mortar.
- Provide setting cushions in joints where weight of stone will cause mortar to be squeezed out.
- Except for paver and flooring units, rake out joints to a depth of 2 1/2 times their width but not less than 12mm to provide for pointing mortar.
- Clean out joints to be pointed, remove dirt and loose material and dampen joint surfaced.
- The grout colors shall be the standard colors selected from the range of colors of the approved dry curing grout supplier (BCR - Building Chemical Research Company). Where two colors of stone meet, the colors of joint will be as per Engineer's instruction, but not out of the range of colors of the approved grout supplier (BCR).
- Provide a uniform depth to raked out joints by filling with pointing mortar in layers not exceeding 9mm. Apply pointing mortar in three layers; the first two layers consisting of 2/5 of joint depth. Allow each layer to cure "thumbprint" hard before applying succeeding layer. Tool joints slightly concave and smooth when mortar is "thumbprint" hard.
- Fill joints at paver and flooring units full depth and tool level and smooth when mortar is "thumbprint" hard.
- Protect surfaces of stone adjacent to joints from mortar smears.

Construction Joints

- Caulk construction joints with sealant to meet specified requirements.
- Where control and construction joints are indicated on drawings, install preformed joint filler for full depth of joint including setting bed with space at top of filler let for filling of joint with sealant. Line up joints with control and expansion joints provided in concrete structure and locate otherwise where indicated.

- In case of a stone that needs to be removed, following procedure is adopted
- All pins that keep the stone in place are cut and the element is removed from its place.
- New holes are drilled in the side of the stone (if necessary of a new element) and at corresponding positions in the stones around the stone that has been removed.
- New angles are fixed as described above. (See paragraph 2.0.0 preparation)
- New pins are introduced in the new holes.
- As soon as they are in place the position of the element will be sealed with epoxy grout “Steinkitt”.
- The exact position of the stone is checked by means of spacers (control of the dimension of the joint) and by means of a 3M straight edge (control of position in the plane). Tolerances are as indicated in the specifications.
- Slight adjusting is still possible as long as the epoxy grout is viscous.
- Where horizontal stone panels (same as paragraph 3c which is not adhered.
- Set horizontal stone panels (same as paragraph 3.3.3) in the next joint.
- Support diagonally caused stones entirely by anchors.
- Keep cavities behind extension facing panels free of mortar or other foreign materials.

StoneCoping

- Install copings in conformance with BS 5642, Part 2.
- Install copings on a solid bed of mortar with mortar joint and anchor to structure.
- Seal joints at copings with silicone sealant.
- Seal joints at sloped surfaces with silicone sealant.



+ Installation Of Cladding (Wet Fixing)

(Wall Facing)

- Install stone with mortar bed and mortar joints or an approved adhesive.
- Set interior wall facing panels before finish flooring is installed. Use plastic setting cushions and spacers where required to maintain uniform joints.
- Grout colors shall be the standard colors selected from the range of colors of the approved dry curing grout supplier
- Provide control joints at locations indicated on drawings.
- Co-ordinate fabrications to ensure modula construction.

+ Installation Of Suspended Stone Soffits

- Install suspension hangers, support framing, anchorage and stone as indicated on drawings, and in accordance with design requirements approved by the Engineer.
- Install stone with open joints and concealed spacers to maintain alignment of joints.

+ Installation Of Exterior Stone Paving

- Install stone pavers with mortar bed setting and mortar joints.
- Provide control joints at locations indicated on drawings.

+ Installation Of Roof Terrace Pavers

- Level and compact aggregate installed over insulation.
- Install pavers on aggregate with top surfaces of adjacent pavers within 2mm of each other and with slightly open joints.
- Installation Of Interior Stone Flooring, Steps & Risers
- Install stone units on concrete slabs with mortar bed setting in conformance with CP 202 and with mortar joints.
- Provide control joints at locations indicated on drawings.

- Install stone flooring in elevator car Nos.1, 2, 3 & 4 with thin set bedding and grouted joints. Grout colors shall be the standard colors selected from the range of colors of the approved dry curing grout supplier. Where two colors of stone meet, the color of joint will be as per Engineer's instruction, but not out of the range of colors of the approved grout supplier. Prime subfloor, and place and grout stone in strict accordance with this set manufacturer's recommendations.
- Apply sealer to interior stone flooring when it is thoroughly dry and clean and free from oil, grease and other foreign materials. Apply sealer in two coats by roller, brush or spray at rate of 7 to 10 square meters per liter as determined by porosity of granite.

Adjustment And Cleaning

- Clean stone surfaces with water and soft bristle brushes immediately following stone installation and joint sealing to remove stains, dirt, mortar smears, sealant, and other foreign materials. Do not use cleaning compounds or wire brushes.
- Protect adjacent surfaces and property from damage while cleaning.

6.4 Protection

- Protect corners and edges of stone units that are vulnerable to damage by continuing construction. Protect them by means of wood or other rugged materials secured in a manner that will not damage or stain finish surfaces.
- Protect stone paving, flooring, fitment facing, steps, planters and fountain from damage by continuing work of this and other sections. Use only non-staining protection materials.
- Protect stone from staining and damage by concreting operations.
- Remove protection when risk of damage is no longer present and without damage to stone.

7.0 List of Projects Executed

Sr. NO	PROJECT	CONTRACTOR
1	Dubai Courts, Dubai.	S.S.Lootah Contracting, Dubai.
2	Dubai Land Department.	S.S.Lootah Contracting, Dubai.
3	Al Maktoum Residence Bldg.	Al Ahmadiyah Contracting Co. Dubai
4	Al Qasami Mosque, Sharjah.	Arabtec Contracting Co, Sharjah.
5	Sheikh Sultan Palace – Guest House	Interfurn Interior Design, Sharjah.
6	Al Sayegh Tower, SharjahBuhairah	Al Hamad Contracting Co. Sharjah
7	Salem Tower, Shj.Buhaira	Darwish Engineering, Dubai.
8	Palace For Sheikh Hamad Bin Jassim Al Thani, Qatar.	Qatar Building Contracting, Qatar.
9	Al Wajbah Complex, Qatar.	Midmac Contracting, Qatar.
10	Al Nejaada Complex, Qatar.	Midmac Contracting, Qatar.
11	Airport Hotel, Dubai.	E.C.C. Contracting, Duabi.
12	Mariott Hotel, Dubai.	Interiors Int. Décor – Dubai.
13	Dubai Main Post Office.	Saleh Construction, Dubai.
14	Saleh Main Office Building.	Saleh Construction, Dubai.
15	Mr.HamadSohailOwaidha Al Khaili Bldg.	Al Hudaiba Contracting L.L.C
16	H.H. Sheikh Sultan Bin Zayed Private Villa.	Barek Engineering Co. - Abu Dhabi.
17	Private Residential Complex ,Khalfan Al Katbi.	Barek Engineering Co. – Abu Dhabi.
18	Late Ali Bin HamoodahMajlis.	Mbh Interiors
19	Sheikh Marwan Palace – Dubai	Arabtec Interior Design (PinoMeroni)



20	Bin Hamoodah Palace	Edico. – Abu Dhabi.
21	Abu Dhabi Chamber Of Commerce & Industry.	
22	Cosmo Restaurant	Union Properties, Dubai.
23	Al Kaitoob Bldg. Cont.	Adnan Saffarini – Dubai.
24	Villa Hussain Abdullah Belshalat	Emaar, Dubai.
25	Royal Suites In Tawam Hospital, Al Ain	
26	Bldg. For Abdul Rahman BelsalahSatwa, Dubai.	Al Arif Contracting Co.
27	Alfa Contracting	Adnan Saffarini
28	United Engineering Construction For Sheikh Mana&Moh'dAbna	Adnan Saffarini, Dubai.
29	Dubai Modern Training School	Sun Engineering & Cont.
30	Howard Johnson Hotel, Dubai	Saleh Constructions.
31	Govt. Of Dubai Real Estate	Saleh Constructions, Dubai.
32	Dubai Cruise Terminal, Dubai	Dubai Civil Engineering, Dubai.
33	Noof Villa, Sharjah.	United Engineering Const. Dubai.
34	Jasim Al Sabri Bldg., Sharjah.	United Coast For Cont., Sharjah.
35	Comm. Bldg. H.E. Ahmed Bin Khalaf	Golden Arrow Interiors, Sharjah.
36	Sharjah Airport 1st. Class Lounge	Creatis – Dubai.
37	Al Jazirah Club	French Design (Al Hamed) Abu Dhabi.
38	Abdallah Amine Al Awade	Civilco(Abu Dhabi).
39	Emaar Main Office	Al Shafar Transport – Dubai.
40	Corina Group Villa	Ginco, D G Jones & Partners.



41	Al Salam Studio – Wafi City	Atelier 21, Dubai.
42	Emirates Post-Al Ain.	Al Hamad Cont., Sharjah.
43	Emirates Post – Jumeirah/R A K.	Atelier 21, Dubai.
44	Al AinMunicipality, Al Ain.	Al Aas Group, Al Ain.
45	Twin Villa, Dasman.	Golden Arrow Interiors, Sharjah.
46	Al Rosthamani Villa	RosthamaniPegal
47	Le Royal Meridian	Touchwood
48	NMC Hospital Dubai	Union Properties, Dubai.
49	Jack & Jones Shop - Yas Mall Abu Dhabi	Amana Real Estate
50	Yateem Optician - Yas Mall Abu Dhabi	Amana Real Estate
51	Zenith Shop - Dubai Mall	Imagine Interiors
52	Ahmad Al Mohairi Villas - Khawaneej Dubai	Ahmad Al Mohairi
53	Sharjah Media Corporation - Sharjah	Amana Real Estate
54	TasameemTwin Towers, Business Bay Dubai	Construction &Reconst. Eng. Co
55	Twin Towers, Al Khan Sharjah (Shk. Saqer bin Al Qasimi)	Sun Engineering & Cont.
56	Twin Villas In DIP	Union Contracting
57	Trade Center Dubai	Mazaya Middle East

Hotels



Hotels



Hotels



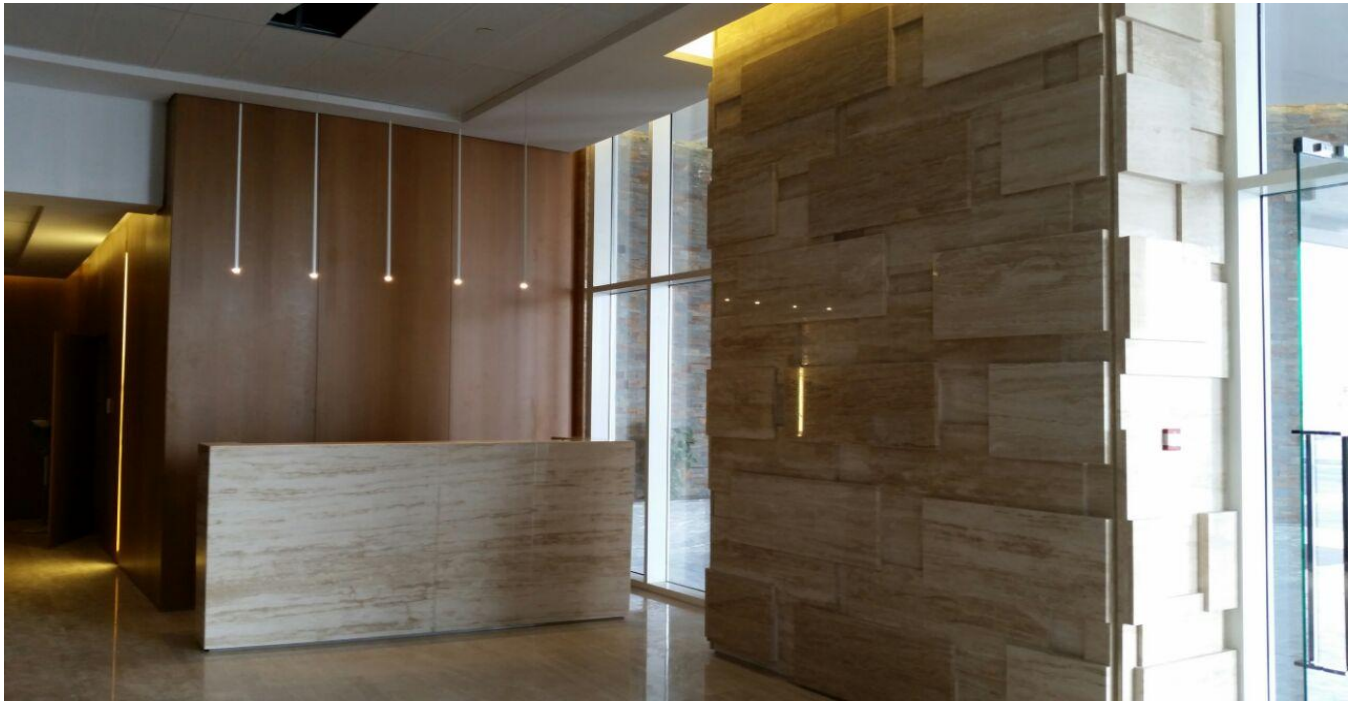
Yateem Optics - Yass Mall Abu Dhabi



Emirates Driving Institute - Al Qusais



Tasameem Twin Towers, Business Bay Dubai



Chourie Building - Dubai





Chourie Building - Dubai





Chourie Building - Dubai





Hackett London - Mall of Emirates Dubai



Ajman Kempenski Hotel



Main Dubai Post Office



Convention Center – Dubai Trade Center



Zenith Shop – Dubai Mall



Al Dhafrah Residential Building in Fujairah



Tara Jewellery Dubai Mall



Dubai Press Club



Tiger Contracting Building – Buhaira Cornich





Residential Building – Saleh Bin Lahej



Private Residential Building – Saleh Bin Lahej



Tiger Contracting Building – SharjahTowe



Residential Building – Union contracting

